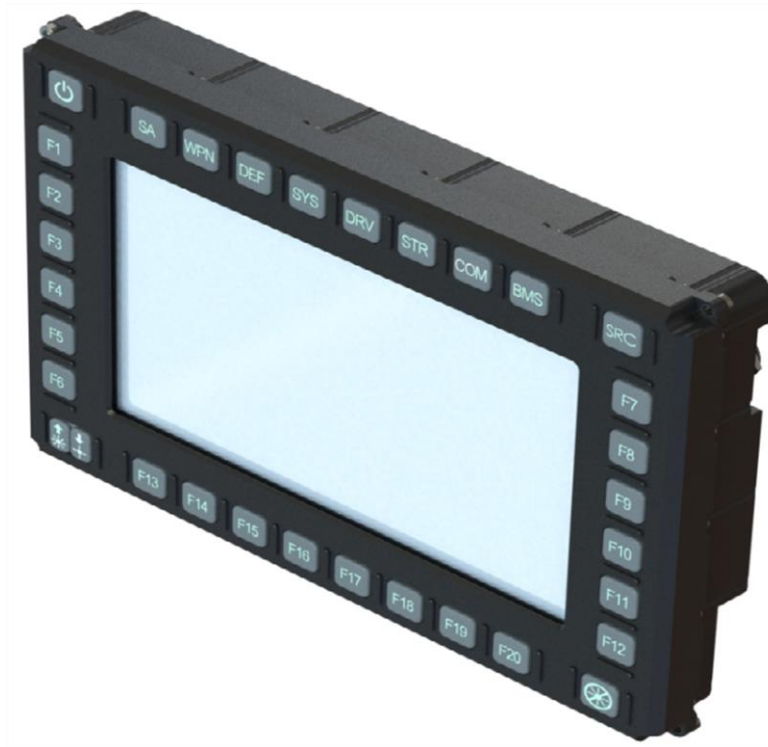


## *Black Opal Model G12-7917* Flat Panel Display System



<b>Chapter</b>	<b>Page</b>
<b>1 DESCRIPTION</b>	<b>1-1</b>
<b>2 SPECIFICATIONS</b>	<b>2-1</b>
2.1 System Performance	2-1
2.2 Controls	2-3
2.2.1 Local	2-3
2.2.2 Remote	2-3
2.3 Communications	2-4
2.4 Physical Characteristics	2-4
2.5 Electrical Requirements	2-4
2.6 Environmental	2-5
2.7 Connector/Pin Details	2-5
<b>3 SET-UP</b>	<b>3-1</b>
3.1 Mounts	3-1
3.2 Connections	3-2
3.3 Set-up Procedure	3-3
3.4 Heating and Cooling	3-4
<b>4 OUTLINE DRAWING</b>	<b>4-1</b>
<b>LIST OF FIGURES</b>	
Figure 3-1: Mounts	3-1
Figure 3-2: Connections	3-2
Figure 4-1: Outline Drawing	4-1

## ***Black Opal Model G12-7917*** Flat Panel Display System

### 1 DESCRIPTION

Black Opal G12-7917 is a 12.1 "HD 1280x800 multi-function GVA-compliant display that supports DEF STAN 00-82 video processing, in a sealed and N<sub>2</sub> purged chassis. The display also supports low-latency CVBS video inputs and a HD-SDI input (with a re-clocked HD-SDI output).

The G12-7917 comes fitted with an x86 Processor module and resistive touch-screen. The processor hosts user interfaces and application software, in a fan-less package. Graphics and DEF STAN 00-82 video processed by the x86 is shown on-screen mixed with low-latency CVBS/HD-SDI video.

The G12-7917's LCD screen is protected by a robust laminated glass window, which includes a planar EMI shield. The LCD is outfitted with a high brightness LED backlight to support operation in high ambient light environments. Button backlighting can be set red or green.

Because it's internal x86 hardware is built around modules, the G12-7917 can be upgraded through it's working life with the new processors, more RAM and a larger SSD. With surplus USB3 and USB2 inside the chassis to support any new and legacy accessories, the G12-7917 supports future functional upgrades.

Black Opal G12-7917 display supports DEF STAN 00-82 video input. It has 28 GVA-compliant buttons that signal the x86 module via UART, as well as 5 extra buttons for backlight and power control (including a dedicated shutdown/blackout button). Black Opal Display Systems are designed to comply with MIL-STD-810G for Environmental Survival and MIL-STD-461F for Conducted and Radiated emission compliance. For Airborne applications and transportation, a pressure safety valve ensures safe operation beyond 15,000ft altitude.

The G12-7917 is part of family of GVA-compliant models. Optional features available in other models in this series include:

- Sunlight-readable backlight (1000cd/m<sup>2</sup>)
- Resistive touch screen (either externally connected via USB2 or internally connected to the x86)
- Other video inputs, such as HDMI, S-Video, RGB – all supporting low-latency video processing.
- Video outputs, such as HDMI, CVBS, RGB
- NVIS backlight
- No Pressure relief valve (fully-sealed)
- NVIS-compatible IR touch screen (no calibration or drivers required)
- Other x86 processor modules (processor family, SSD density, RAM density, etc)
- Other connector styles / sizes
- Other mounting methods

## *Black Opal Model G12-7917* Flat Panel Display System

### 2 SYSTEM SPECIFICATIONS

Notation - use of brackets in tables: [notes & qualifications] (units) {alternate units}.

#### 2.1 System Performance

PARAMETER		SPECIFICATION
<b>Designation</b>		
<b>G12-7917</b>		Display, 12.1", 1280x800, Internal fan-less x86.
<b>Control</b>		
<b>Control Functions [factory configurable to customer requirements]</b>		Standby; backlight intensity; source toggle; custom comms message on press and release.
<b>Controls</b>		33 tactile LED-backlit buttons
<b>Display</b>		
<b>Type</b>		Amorphous Silicon Active Matrix Colour (24-bit colour) LCD Module
<b>Display Size (") {cm}</b>	<b>diagonal</b>	12.1" {307.3mm}
	<b>active area</b>	10.3" {261.12mm} x 6.4" {163.2mm}
<b>Aspect Ratio [width:height]</b>		16:10
<b>Pixel Number [1 pixel is RGB trio]</b>		1280 x 800
<b>Colour</b>		16.7M (24bit)
<b>Grey Scale</b>		256 (8bit)
<b>Backlight Luminance [LED type; approx.; adjustable] (cdm<sup>-2</sup>)<sup>1</sup></b>	<b>minimum</b>	0.3 minimum (and 0 for black-out)
	<b>maximum</b>	900 (typ)
<b>Contrast Ratio [limiting; LCD]</b>		500:1 min
<b>Response Time [typ.] (ms)</b>		25 [full cycle]
<b>Readability [ambient conditions]</b>		black-out to full direct sunlight [10 <sup>5</sup> lux]
<b>Night Vision Device compatible?</b>		No
<b>System Readiness</b>		x86 boot time is application dependent; typically less than 30s

<sup>1</sup> 1 cdm<sup>-2</sup> = 1 nit.





## *Black Opal Model G12-7917* Flat Panel Display System

PARAMETER		SPECIFICATION
Viewing Angle (°)	vertical	± 80 (min)
	horizontal	± 80 (min)
<b>Video Inputs</b>		
Inputs	Multiple DEF STAN 00-82 via Ethernet, 4 x CVBS, 1x HD-SDI	
Signal Formats	Ethernet	DEF STAN 00-82
	CVBS	PAL/NTSC/SECAM/CCIR-601/RS170
	HD-SDI	SMPTE292-M
<b>x86 Computer</b>		
Processor	Fanless Intel Atom	
Memory	RAM	4GB
	SSD	128GB
Graphics	Intel Graphics 500	
OS Support	Windows or Linux	
<b>Video Outputs</b>		
Outputs	1 x DEF STAN 00-82, 1 x HD-SDI (reclocked)	
<b>Safety &amp; Protection</b>		
Cooling	thermal transfer by internal and external convection;	
Backfill	purged & backfilled [N <sub>2</sub> ]	
Display Window	Antireflection, hard-coated, sealed, EMI/EMC shielded	
Altitude/Decompression	pressure relief valve fitted for >15,000ft	
Electrical Protection	conforms to Def Stan 61-5 Issue 6 Part 6	
Audible Emission [ @ ≥ 10m]	nil	
<b>Support</b>		
MTBF [ @30°C; 50% duty cycle] (hours)	Airborne Rotary Winged	tbd
	Ground Mobile	tbd
	Naval Sheltered	tbd
	Naval Unsheltered	tbd
Operational Life (years)	10	

## *Black Opal Model G12-7917* Flat Panel Display System

### 2.2 Controls

#### 2.2.1 Local

Control Type	Location		Primary Label	Primary Function
<b>Button</b>	upper left corner	left		switch between Power on/off, Standby
	lower right corner	right		blackout mode
	upper right corner	right	<b>SRC</b>	cycle through all available video inputs or configured layouts
	lower left corner	top		backlight up
	lower left corner	bottom		backlight down
	front face	left	<b>F1 - F6</b>	Reconfigurable menu buttons
	front face	right	<b>F7 - F12</b>	Reconfigurable menu buttons
	front face	bottom	<b>F13 - F20</b>	Reconfigurable menu buttons
	front face	upper	<b>As per DEF STAN 23-09</b>	Functional area selection buttons

#### 2.2.2 Remote

Any front bezel button can be pressed, held and released through a UART from x86 Processor control. Conversely a button code is transmitted to the x86 UART when any of the front face buttons are pressed / released. An Interface Control Document is available from the factory.

## *Black Opal Model G12-7917* Flat Panel Display System

### 2.3 Communications

PARAMETER		SPECIFICATION
<b>Ports</b>		1x serial port (option), 2x USB ports, 1x GBE port
<b>Serial</b>	<b>Format</b>	RS-422, USB2.0, 802.3ab
	<b>Rate (Baud)</b>	selectable 9,600 to 115,200 (19,200 default), USB 2.0 High Speed

### 2.4 Physical Characteristics

PARAMETER		SPECIFICATION
<b>Mass [approx.] (kg)</b>		< 5
<b>Dimensions (mm)</b>	<b>Width</b>	368.3
	<b>Height</b>	268.4
	<b>Depth</b>	64 (not inc connectors)
<b>Finish</b>		Customer specified
<b>Specific Gravity</b>		> 1 [non-floatation]
<b>Mounting</b>	<b>Panel Mount</b>	4 x 5.4mm dia. clearance holes, one in each corner
	<b>Rear Mount</b>	4 x threaded M6 mounting holes 6mm deep, VESA 200mm x 100mm

### 2.5 Electrical Requirements

PARAMETER		SPECIFICATION
<b>Supply Voltage (Vdc) [DEF STAN 61-5 Issue 6 Part 6]</b>		9 to 32 [12 and 24 nominal]
<b>Current Drain [@ 28Vdc; maximum] (A)</b>	<b>heater on</b>	< 5
	<b>heater off</b>	< 2

## *Black Opal Model G12-7917* Flat Panel Display System

### 2.6 Environmental

PARAMETER			SPECIFICATION
Temperature (°C) <sup>2</sup> [MIL-STD-810F, Method 501.4; Method 502.4, Procedures I, II]	Operate	min.	-40 [without wind-chill]
		max.	+55 [without solar radiation]
	Survive	min.	-40 [without wind-chill]
		max.	+71 [without solar radiation]
Vibration and Shock <sup>3</sup>			MIL-STD-810G
Sealing <sup>4</sup>	with pressure relief valve		IP66
	without pressure relief valve		IP67
EMI/EMC <sup>3,4</sup>			MIL-STD-461F, Def Stan 59-411 Land Class A

### 2.7 Connector/Pin Details

No.	Name	Pin Marking	Purpose	Notes for Harness	Comment
<b>J1: "PWR": Power Input: D38999/24FC4PN.</b> Mating line connector is D38999/26FC4SN					
1	DC28V_POSITIVE	A	Input power (+28V)	5A minimum	20..32V input (A and C are internally joined)
2	DC0V_RETURN	B	dc- (GND) connection	5A minimum	0V return (B and D are internally joined)
3	DC28V_POSITIVE	C	Input power (+28V)	5A minimum	20..32V input (A and C are internally joined)
4	DC0V_RETURN	D	dc- (GND) connection	5A minimum	0V return (B and D are internally joined)
<b>J7: Earth Point: M4, 6mm deep (max)</b>					

<sup>2</sup> When used in accordance with procedures in User's Manual

<sup>3</sup> Refer to manufacturer for details.

<sup>4</sup> With compliant line connectors attached, including sealing line connections.

## *Black Opal Model G12-7917* Flat Panel Display System

No.	Name	Pin Marking	Purpose	Notes for Harness	Comment
<b>J4: "Ethernet": Comms Connection: D38999/24FB35SA.</b>					
Mating line connector is D38999/26FB35PA					
1	Do not connect	1	No connection	reserved	
2	BI_DD-	2	Data pair 4 -	Twisted pair with BI_DD+	
3	Do not connect	3	No connection	reserved	
4	BI_DC-	4	Data pair 3 -	Twisted pair with BI_DC+	
5	BI_DC+	5	Data pair 3 +	Twisted pair with BI_DC-	
6	Do not connect	6	No connection	reserved	
7	BI_DA+	7	Data pair 1 +	Twisted pair with BI_DA-	
8	Do not connect	8	No connection	reserved	
9	BI_DB+	9	Data pair 2 +	Twisted pair with BI_DB-	
10	BI_DB-	10	Data pair 2 -	Twisted pair with BI_DB+	
11	BI_DD+	11	Data pair 4 +	Twisted pair with BI_DD-	
12	SHIELD	12	Cable shield	Shield	
13	BI_DA-	13	Data pair 1 -	Twisted pair with BI_DA+	
<b>J5: "USB": Dual USB2.0: D38999/24FA35SN</b>					
Mating line connector is D38999/26FA35PN					
1	USB_Ground	1	USB Ground		
2	USB_2_D-	2	USB 2 Data -	Twisted pair with USB_2_D+	
3	USB_2_D+	3	USB 2 Data +	Twisted pair with USB_2_D-	
4	USB_1_D-	4	USB 1 Data -	Twisted pair with USB_1_D+	
5	USB_1_D+	5	USB 1 Data +	Twisted pair with USB_1_D-	
6	USB_+5V	6	USB VBUS		1A limited



## *Black Opal Model G12-7917* Flat Panel Display System

No.	Name	Pin Marking	Purpose	Notes for Harness	Comment
<b>J6: "Video In": D38999/24FB35SN</b>					
Mating line connector is D38999/26FB35PN					
1	CVBS1_IN	1	CVBS1 input signal	Coax, 75Ω centre	
2	CVBS1_GND	2	CVBS1 input signal return	Coax, 75Ω shield	
3	CVBS2_IN	1	CVBS1 input signal	Coax, 75Ω centre	
4	CVBS3_GND	2	CVBS1 input signal return	Coax, 75Ω shield	
5	CVBS3_IN	1	CVBS1 input signal	Coax, 75Ω centre	
6	CVBS3_GND	2	CVBS1 input signal return	Coax, 75Ω shield	
7	CVBS4_IN	1	CVBS1 input signal	Coax, 75Ω centre	
8	CVBS4_GND	2	CVBS1 input signal return	Coax, 75Ω shield	
9	Do not connect	9	No connection	reserved	
10	Do not connect	10	No connection	reserved	
11	Do not connect	11	No connection	reserved	
12	Do not connect	12	No connection	reserved	
13	Do not connect	13	No connection	reserved	
<b>J2: "HD-SDI IN": BNC</b>					
<b>J3: "HD-SDI OUT": BNC</b>					
<b>J8: 'AUX' – factory use only. Do not connect.</b>					

**Note:** For EMI/EMC compliance, the cables that run to *each connector* MUST have a high quality RF shield over all conductors, and this shield **must** be RF bonded to the connector shell. *This includes the power cable.*

Additionally, a small ferrite ring clamped over the outside of each cable near the connector can reduce emissions, and may be required for compliance. The need for these will be installation dependent – and will only improve the EMI profile of the system, so are strongly recommended.

## ***Black Opal Model G12-7917*** Flat Panel Display System

### 3 SET-UP

#### 3.1 Mounts

The unit has two methods of mounting:

1. by rear 200mm x 100mm VESA pattern using 4 x threaded M6 mounting holes 6mm deep on the rear;  
and
2. panel mounting using 4 x 5.4mm dia. clearance holes, one in each corner.



Figure 3-1: Mounts

## ***Black Opal Model G12-7917*** Flat Panel Display System

### 3.2 Connections

The unit has five connection points located on the rear of the unit:

- Connector J1, "PWR", Power connector;
- Connector J2, the Earth Point connector;
- Connector J3, "ETHERNET", the Gigabit Ethernet connector;
- Connector J4, "USB", the dual USB2.0 connector;
- Connector J5, "Video In", a CVBS Input connector;
- Connector J6, "HD-SDI IN", a SDI Input connector;
- Connector J7, "HD-SDI OUT", a SDI Output connector;
- Connector J8, "AUX", a factory access connector;

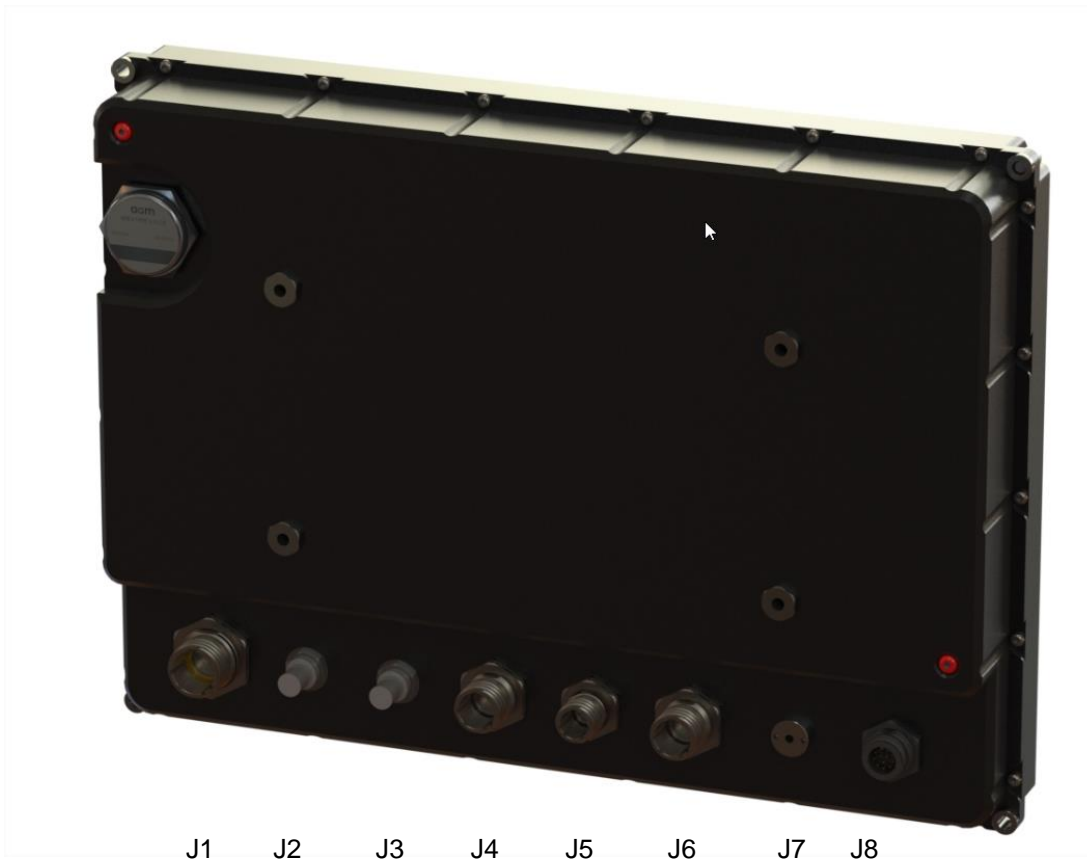


Figure 3-2: Connections

## ***Black Opal Model G12-7917*** Flat Panel Display System

### 3.3 Set-up Procedure

**CAUTION:** User-supplied cables must be correctly wired (see list of Connector/Pin Details).

Ensure that external power is within the range specified herein.

Ensure that external power is OFF before proceeding with set-up.

- Mount the unit to the vehicle or platform, using one of the mounting methods provided.
- Connect the earth point on the unit to an appropriate point on the vehicle.
- Connect the required video input cables to the display, and to the external imaging system(s) or recorder output.
- If required, connect the required video output cables to the display, and to the external destination.
- If required, connect the required data cable to the display, and to the communication data source.
- Connect the required power cable to the display, and to the external power source.

## *Black Opal Model G12-7917* Flat Panel Display System

### 3.4 Heating and Cooling

The unit contains internal heating and cooling mechanisms that are triggered at certain internal temperatures. Every heating and cooling setting can be programmed by the user, but we do not recommend deviating from the default settings. If a change is required contact the factory for instructions. The data below represents system default settings.

The approximate warm-up rate is 30s/C° (e.g. with starting internal temperature of -40°C, unit will operate after 15 minutes; with starting internal temperature of -25°C, unit will power up in approximately 7 minutes). As a safeguard, an internal timer is implemented to guarantee the display will power on and operate after 15 minutes of heater activity regardless of the actual internal temperature.

Once a unit has warmed it will operate normally provided that the ambient temperature stays within the specified operating temperature range.

The operating procedures, internal temperatures and resulting operating conditions are shown in the following table.

Ambient Temp. (°C)	Procedure	Internal Temp. (°C)	Operating Condition
< -40	do not attempt to operate unit		
-40 to 0	de-ice unit prior to start-up	≤ -10	unit will not power up; heater on
		> -10	unit will power up; heater on
0 to +55	none	≥ 10	heater off
		≥ 55	backlight power may be reduced to manage thermal load and keep unit internal temp in operating range.
+55 to +71	provide forced air cooling		
+71	do not attempt to operate unit	≥ 87	will run for >0.5hrs as per MIL-STD-810G
> 71			unit will not power up

## Black Opal Model G12-7917 Flat Panel Display System

### 4 OUTLINE DRAWING

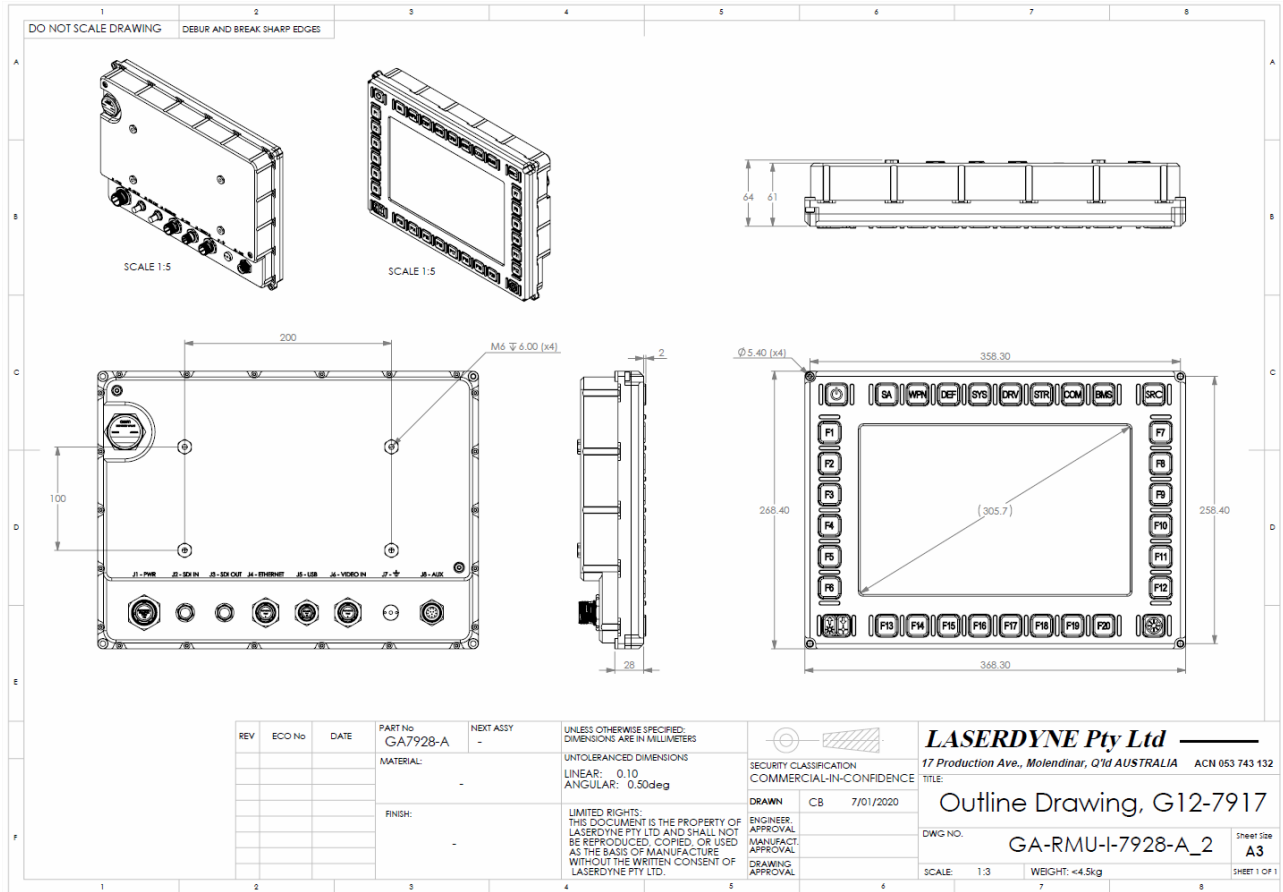


Figure 4-1: Outline Drawing



A Division of Laserdyne Pty Ltd  
A.C.N. 053 743 132

17 Production Ave  
Molendinar  
Queensland 4214  
Australia

Tel: (07) 5594 9772 Int'l Tel: 61 7 5594 9772  
Fax: (07) 5594 9981 Int'l Fax: 61 7 5594 9981

email: laserdyne@laserdyne.com.au  
website: www.laserdyne.com.au

The information contained herein is proprietary to Laserdyne Pty Ltd. No part of this work may be reproduced or copied in any way without prior written permission of Laserdyne Pty Ltd.  
Note: specifications herein are subject to change without notice.

Copyright. All Rights Reserved. Laserdyne Pty Ltd

File: PS-RMU-S-7917-A_1	Author(s): NG,MW,AK	Authorised: TW	Rev. Date: 20.02.20	Page 4-1
-------------------------	---------------------	----------------	---------------------	----------

# Product Specification



## DOCUMENT REVISION INFORMATION

Rev	Date	Details	Author
A	20 Jan 2020	Original draft release for review	MW/CB



**A Division of Laserdyne Pty Ltd**  
A.C.N. 053 743 132

**17 Production Ave**  
**Molendinar**  
**Queensland 4214**  
**Australia**

**Tel: (07) 5594 9772 Int'l Tel: 61 7 5594 9772**  
**Fax: (07) 5594 9981 Int'l Fax: 61 7 5594 9981**

**email: [laserdyne@laserdyne.com.au](mailto:laserdyne@laserdyne.com.au)**  
**website: [www.laserdyne.com.au](http://www.laserdyne.com.au)**

*The information contained herein is proprietary to Laserdyne Pty Ltd. No part of this work may be reproduced or copied in any way without prior written permission of Laserdyne Pty Ltd.  
Note: specifications herein are subject to change without notice.*

Copyright. All Rights Reserved. Laserdyne Pty Ltd

File: <b>PS-RMU-S-7917-A_1</b>	Author(s): NG,MW,AK	Authorised: TW	Rev. Date: 20.02.20	Page 4-2
--------------------------------	---------------------	----------------	---------------------	----------